

Optimized Provider Scheduling



The Challenging Nature of Healthcare Scheduling

Clinical scheduling is complex.

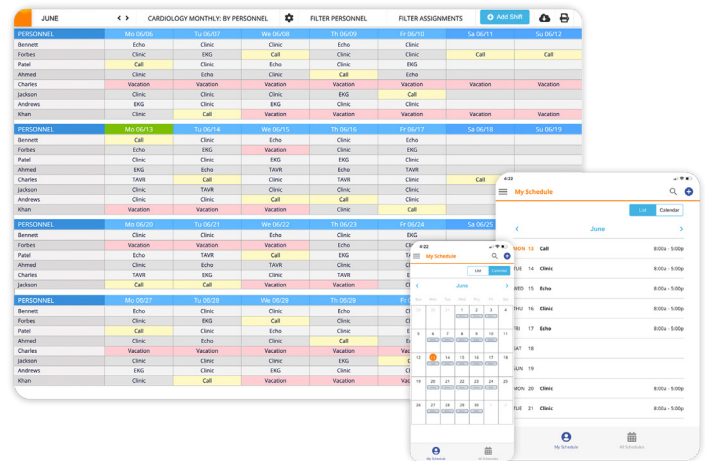
Care teams **lose an average of 291 hours** per year to the struggle of building schedules that balance the needs of providers, patients, and business objectives.

Scheduling mistakes are a major dissatisfaction for providers.

Dissatisfaction and burnout lead to an average provider **turnover rate of 6.8%**, and each provider **costs \$164,000** on average to replace.

The Solution—An Easy-to-Use Scheduling Tool

Our solution considers thousands of variables to create the best possible schedules—every time. While other scheduling tools leave gaps in coverage for administrators to fill, ours consistently generates complete and optimized schedules that auto-refresh across devices.



82%

reduction in time spent managing schedules.



86.5%

reduction in time spent contacting on-call providers.



\$2.8M

savings in improved provider retention.

Benefits of Complete, Optimized Scheduling

Streamlined workflows for higher efficiency.

- Accurate schedules, complete without gaps
- Easily locate providers to improve speed to care
- Real-time schedules that auto-refresh across devices
- Detailed reporting and analytics to align resource supply and demand
- One partner, lower cost, and single integration management

Improved provider satisfaction.

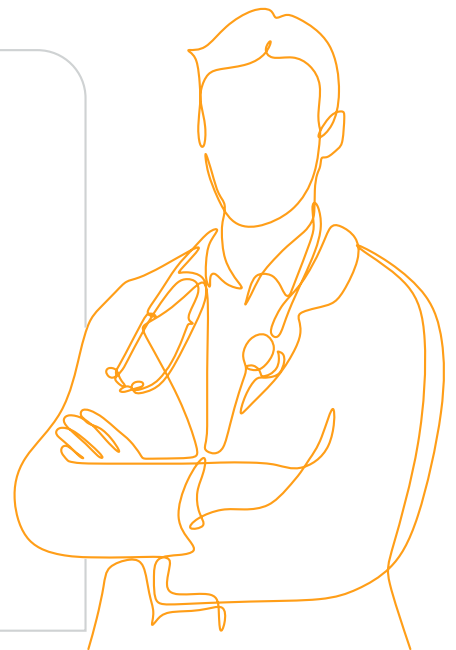
- Access schedule anywhere, anytime
- Centralized request calendar with instant time-off approval
- Online shift changes and schedule adjustments
- Personal preferences, transparency, and fairness



Any software can make a schedule, but PerfectServe's Lightning Bolt Scheduling Solution's software generates a schedule that's optimized for the unique needs of each of the providers.

– **Dr. Kenneth Serio**

Scheduling Physician
Scripps Medical Group | La Jolla, CA



About PerfectServe

[PerfectServe](#) accelerates speed to care by optimizing provider schedules, streamlining clinical communication, and engaging patients and their families in the care experience. Our cloud-based software simplifies complex clinical workflows and schedules with secure and timely communication by dynamically routing messages to the right person at the right time. We drive more efficient care collaboration in all settings to improve patient outcomes and bring joy back to caregivers. PerfectServe has 25 years of experience and is a trusted partner to more than 500 hospitals and 30,000 medical practices.



To learn more or schedule a demo, please contact us:

1.866.202.4323 Ext. 4
connect@lightning-bolt.com
lightning-bolt.com